

Pollack (*Pollachius pollachius*) in subareas 6–7 (Celtic Seas and the English Channel)

ICES advice on fishing opportunities

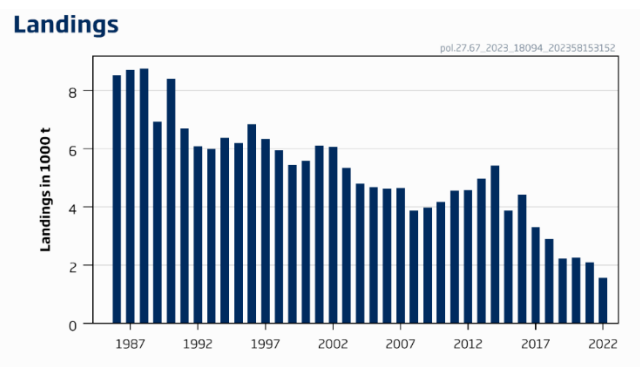
ICES advises that when the MSY approach and precautionary considerations are applied, there should be zero catch in 2024.

ICES advice on conservation aspects

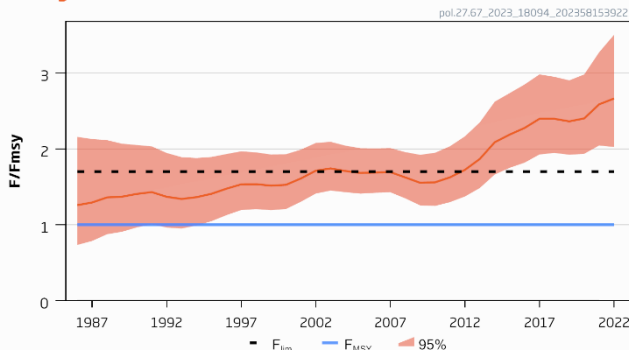
ICES has not identified any conservation aspects.

Stock development over time

Fishing pressure on the stock is above F_{MSY} and F_{lim} ; stock size is below MSY $B_{trigger}$ and B_{lim} .



F/F_{msy}



B/B_{msy}

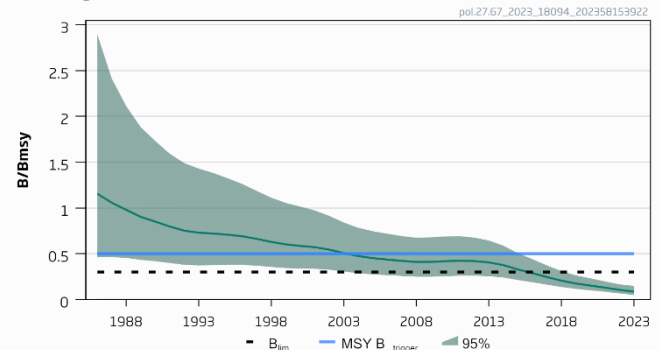


Figure 1 Pollack in subareas 6–7. Summary of the stock assessment. Official landings prior to 2003, when InterCatch landings became available. Discards are considered negligible.

Conservation status

ICES is not aware of any information on stock/species-specific conservation status.

Catch scenarios

Table 1 Pollack in subareas 6–7. Assumptions made for the interim year and in the forecast.

Variable	Value	Notes
F (2023)/ F_{MSY}	2.34	F corresponding to <i>status quo</i> catch
B (2024)/ B_{MSY}	0.115	Short-term forecast (STF) with <i>status quo</i> catch
Catch (2023)	1967	<i>Status quo</i> catch (average 2020–2022); in tonnes

Table 2 Pollack in subareas 6–7. Annual catch scenarios. Weights are in tonnes.

Basis	Total catch (2024)	Fishing mortality F_{2024}/F_{MSY}	Stock size B_{2025}/B_{MSY}	% B change [^]	% advice change ^{^^}
ICES advice basis					
MSY approach (F = 0)	0	0.00	0.185	61	-100
Other scenarios					
F_{MSY}	204	0.23	0.175	52	-94
F_{SQ}	1600	2.34	0.102	-11.3	-52
F = 0	0	0.00	0.185	61	-100

[^] Biomass 2025 relative to biomass 2024.

^{^^} Advice value for 2024 relative to the advice value for 2023 (3360 tonnes).

The change in the advice is due to the fact that, according to the new the assessment method, no catch option could bring the biomass above B_{lim} in the short term.

Basis of the advice

Table 3 Pollack in subareas 6–7. The basis of the advice.

Advice basis	MSY approach
Management plan	ICES is aware of the multiannual management plan (MAP) that has been adopted by the EU for this stock (EU, 2019) and that ICES considers to be precautionary. The MAP stipulates that when the F_{MSY} ranges are not available, fishing opportunities should be based on the best available advice. There is no agreed shared management plan with UK for this stock, and ICES provides advice according to ICES precautionary approach.

Quality of the assessment

The assessment was benchmarked in 2023 (ICES, 2023). The method for providing advice changed in 2023, following new ICES guidelines (ICES, 2022a); advice is now based on a SPiCT assessment. The surveys used to calculate the index do not target preferred pollack habitat, and the index is based on few samples. Although the index is uncertain, it shows a strong declining trend.

Recreational catch is likely to be a large component of the total catch (Radford *et al.*, 2018). Due to lack of data, recreational catch is not included in the assessment; however, the current assessment has been shown to be robust to a range of assumptions of recreational catch levels.

The stock structure is poorly defined.

Issues relevant for the advice

The benchmarked assessment (ICES, 2023) has resulted in a revised perception of the stock, with stock size below MSY $B_{trigger}$ and B_{lim} . Previously, advice was issued under the precautionary approach; the present advice is based on MSY approach and is for zero catch.

Reference points

Table 4 Pollack in subareas 6–7. Reference points, values, and their technical basis.*

Framework	Reference point	Value	Technical basis	Source
MSY approach	MSY $B_{trigger}$	$0.5 \times B_{MSY}$	Relative value (B/B_{MSY}) from the SPiCT assessment model. B_{MSY} is estimated directly from the SPiCT model and changes when the assessment is updated.	ICES (2021, 2023a)
	F_{MSY}	$1 \times F_{MSY}$	Relative value (F/F_{MSY}) from the SPiCT assessment model. F_{MSY} is estimated directly from the SPiCT model and changes when the assessment is updated.	ICES (2021, 2023a)
Precautionary approach	B_{lim}	$0.3 \times B_{MSY}$	Relative value (B/B_{MSY}) (equilibrium yield at this biomass is 50% of MSY)	ICES (2021, 2023a)
	B_{pa}	Not defined		
	F_{lim}	$1.7 \times F_{MSY}$	Relative value (F/F_{MSY}) (the F that drives the stock to B_{lim})	ICES (2021, 2023a)
	F_{pa}	Not defined		
Management plan	SSB_{mgt}	Not defined		
	F_{mgt}	Not defined		

* No reference points are defined for this stock in terms of absolute values. The SPiCT estimated values of the ratios F/F_{MSY} and B/B_{MSY} are used to estimate stock status relative to the MSY reference points.

Basis of the assessment

Table 5 Pollack in subareas 6–7. The basis of the assessment.

ICES stock data category	2 (ICES, 2022a)
Assessment type	Surplus Production model in Continuous Time (SPiCT; ICES, 2022b)
Input data	Commercial landings; VAST survey index from 2005, utilizing Irish Groundfish Survey [G7212], Irish Anglerfish and Megrin Survey [G3098], French Southern Atlantic Bottom Trawl Survey [G9527] and French Channel Groundfish Survey [G3425].
Discards and bycatch	Negligible (less than 1% of the commercial catch)
Recreational catches	Not used, but considered substantial
Indicators	None
Other information	Last benchmarked in 2023 (ICES, 2023b)
Working group	Working Group for the Celtic Seas Ecoregion (WGCSE)

History of the advice, catch, and management

Table 6 Pollack in subareas 6–7. History of ICES advice, the agreed TAC, and ICES estimates of commercial landings. Weights are in tonnes.

Year	ICES advice	Commercial catch corresponding to advice	EU TAC Subarea 6*	EU TAC Subarea 7	Total commercial landings Subarea 6	Total commercial landings Subarea 7	Total commercial landings
2000		-	1100	17000	191	5377	5568
2001		-	1100	17000	217	5885	6102
2002		-	1100	17000	131	5922	6053
2003		-	880	17000	203	5348	5551
2004		-	704	17000	136	4786	4922
2005		-	563	17000	67	4725	4792
2006		-	450	15300	37	4661	4698
2007		-	450	15300	58	4611	4669
2008		-	450	15300	53	3861	3914
2009		-	450	15300	37	4063	4100
2010		-	450	13770	79	4209	4288
2011		-	397	13495	46	4619	4666
2012	No increase in catch	-	397	13495	45	4469	4514
2013	Catch should be no more than 1% more than recent catch (last three years)	< 4200	397	13495	57	4468	4525
2014	Same advice as 2013	< 4200	397	13495	44	5359	5403

Year	ICES advice	Commercial catch corresponding to advice	EU TAC Subarea 6*	EU TAC Subarea 7	Total commercial landings Subarea 6	Total commercial landings Subarea 7	Total commercial landings
2015	Same advised values as given for 2013	< 4200	397	13495	48	3740	3788
2016	Precautionary approach (same advised commercial landings value as given for 2015)	≤ 4200	397	13495	74	4206	4280
2017	Precautionary approach (same advised commercial landings value as provided for 2016)	≤ 4200	397	12146	44	3260	3305
2018	Precautionary approach	≤ 4200	397	12163	63	2832	2895
2019	Precautionary approach	≤ 3360	397	12163	54	2165	2219
2020	Precautionary approach	≤ 3360	238	12163	48	2210	2258
2021	Precautionary approach	≤ 3360	184	9426	76	2011	2087
2022	Precautionary approach	≤ 3360	156	8012	33	1525	1558
2023	Precautionary approach	≤ 3360	125	6410			
2024	MSY approach	0					

* Subarea 6, European Union and international waters of Division 5.b (EC until 2020; UK thereafter), and international waters of subareas 12 and 14.

Table 7 Pollack in subareas 6–7. Catch distribution by fleet in 2022 as estimated by ICES.

Total catch	Commercial landings			Commercial discards	Recreational catch
Unknown	Otter trawlers 16.2%	Static nets 52%	Others 31%	< 1%	Estimated to be substantial
	1558 tonnes				

Table 8 Pollack in subareas 6–7. History of official commercial landings in **Subarea 6** by country. Weights are in tonnes.

Year	Belgium	Denmark	France	Germany	Ireland	Netherlands	Norway	Portugal	Spain	Sweden	UK	Total Subarea 6
1950	1	-	-	-	-	-	-	-	-	-	295	296
1951	-	-	-	-	-	-	-	-	-	-	484	484
1952	-	-	-	-	-	1	-	-	-	-	503	504
1953	-	-	-	-	-	-	-	-	-	-	422	422
1954	-	-	-	-	-	-	-	-	-	-	452	452
1955	-	-	-	-	-	-	-	-	-	-	566	566
1956	-	-	-	-	-	-	-	-	-	-	528	528
1957	-	-	-	-	-	-	-	-	-	-	547	547
1958	.	-	-	23	-	-	-	-	-	-	710	733
1959	1	-	-	6	-	-	-	-	-	-	607	614
1960	15	-	-	-	-	-	-	-	-	-	441	456
1961	1	-	-	1	125	-	-	-	-	-	259	386
1962	2	-	-	8	197	-	-	-	-	-	235	442
1963	6	-	-	2	204	-	-	-	-	-	320	532
1964	1	-	-	1	130	-	-	-	-	-	368	500
1965	1	-	-	1	402	-	-	-	-	-	496	900
1966	2	-	-	-	200	-	-	-	-	-	428	630
1967	1	-	-	1	263	-	-	-	-	1106	413	1784
1968	5	-	-	2	214	-	148	-	-	1012	500	1881
1969	1	-	-	4	282	-	-	-	-	1224	667	2178
1970	2	-	-	1	398	-	-	-	-	756	447	1604
1971	1	-	-	5	75	-	-	-	-	750	256	1087
1972	1	-	-	1	127	-	-	-	-	779	317	1225
1973	2	-	-	-	-	-	-	-	-	-	503	505
1974	6	-	-	-	-	3	-	-	-	-	359	368
1975	< 0.5	-	-	1	-	1	4	-	-	-	393	399
1976	7	-	-	-	-	1	-	-	-	-	519	527
1977	-	-	196	-	-	1	2	-	-	-	493	692

Year	Belgium	Denmark	France	Germany	Ireland	Netherlands	Norway	Portugal	Spain	Sweden	UK	Total Subarea 6
1978	-	-	196	-	-	-	4	-	-	-	553	753
1979	-	-	310	-	-	-	-	-	-	-	350	660
1980	-	-	36	-	-	-	-	-	-	-	233	269
1981	-	-	342	-	-	-	-	-	55	-	185	582
1982	-	< 0.5	272	-	-	-	-	-	95	-	103	470
1983	-	-	331	-	-	-	-	-	86	-	148	565
1984	-	-	212	-	-	-	-	-	222	-	194	628
1985	< 0.5	-	224	1	-	-	-	-	283	-	328	836
1986	-	-	145	-	223	-	-	-	2217	-	187	2772
1987	-	< 0.5	108	-	103	-	-	-	860	-	259	1330
1988	-	< 0.5	128	-	163	-	-	-	1925	-	221	2437
1989	-	< 0.5	111	1	103	-	-	-	-	-	179	394
1990	-	-	76	-	150	-	1	-	-	-	192	419
1991	-	-	31	-	145	-	-	-	4	-	189	369
1992	-	< 0.5	21	-	23	-	-	-	< 0.5	-	203	247
1993	-	-	39	-	12	-	-	-	-	-	273	324
1994	-	-	34	< 0.5	26	-	< 0.5	-	-	-	276	336
1995	-	-	64	3	83	-	-	-	-	-	354	504
1996	-	< 0.5	29	< 0.5	97	-	1	-	-	-	210	337
1997	-	-	14	1	69	-	2	-	-	-	162	248
1998	-	-	21	-	60	-	-	< 0.5	< 0.5	-	147	228
1999	-	-	-	-	73	-	3	-	< 0.5	-	136	212
2000	-	-	11	2	62	-	-	-	-	-	116	191
2001	-	-	8	-	108	-	-	-	-	-	101	217
2002	-	-	9	-	26	-	-	-	-	-	96	131
2003	< 0.5	-	3	-	88	-	1	-	-	-	111	203
2004	< 0.5	-	2	-	68	-	1	-	-	-	65	136
2005	-	-	23	-	28	-	-	-	-	-	16	67
2006	-	-	3	< 0.5	31	-	< 0.5	-	4	-	5	42
2007	-	-	10	< 0.5	26	-	7	-	-	-	21	64
2008	-	-	8	-	21	-	1	-	-	-	23	54
2009	-	-	7	-	6	-	< 0.5	-	-	-	25	38
2010	-	-	6	-	34	-	< 0.5	-	-	-	39	80
2011	-	-	2	-	12	-	1	-	-	-	36	51
2012	-	-	2	-	10	-	< 0.5	-	2	-	33	48
2013	-	-	1	-	34	-	< 0.5	-	-	-	22	58
2014	-	-	1	-	25	-	< 0.5	-	-	-	18	44
2015	-	-	< 0.5	-	23	-	< 0.5	-	-	-	25	49
2016	-	-	< 0.5	-	44	-	< 0.5	-	-	-	31	76
2017	-	-	< 0.5	-	33	-	< 0.5	-	-	-	14	47
2018	-	-	< 0.5	-	22 ^c	-	< 0.5	-	-	-	29	51 ^c
2019	-	-	3	-	22 ^c	-	< 0.5	-	-	-	27	51 ^c
2020	-	-	< 0.5	-	16 ^c	-	-	-	-	-	32	48 ^c
2021*	-	-	2	-	29	-	-	-	< 0.5	-	43	75
2022*	-	-	7	1	11	-	-	-	-	-	16	36

* Preliminary official landings.

^c Incomplete/missing as a result of part of the data being unavailable under data confidentiality clauses.

Table 9 Pollack in subareas 6–7. History of official commercial landings in **Subarea 7** by country. Weights are in tonnes.

Year	Belgium	Denmark	France	Germany	Ireland	Netherlands	Norway	Spain	UK	Total Subarea 7
1950	93	-	-	-	-	-	-	-	375	468
1951	74	-	-	2	-	-	-	-	380	456
1952	80	-	-	10	-	-	-	-	336	426
1953	34	-	-	-	-	-	-	-	252	286
1954	17	-	-	4	-	-	-	-	365	386
1955	38	-	-	-	-	-	-	-	247	285
1956	67	-	-	1	-	-	-	-	155	223
1957	219	-	-	6	-	-	-	-	367	592
1958	342	-	-	17	-	-	-	-	233	592
1959	158	-	-	32	-	-	-	-	251	441
1960	317	-	-	-	-	-	-	-	267	584
1961	268	-	-	-	360	-	-	-	210	838
1962	367	-	-	1	369	-	-	-	170	907
1963	95	-	-	-	411	-	-	-	176	682
1964	299	-	-	-	342	-	-	-	194	835
1965	362	-	-	-	335	-	-	-	231	928
1966	456	-	-	-	438	-	-	-	175	1069
1967	417	-	-	-	474	-	-	-	202	1093
1968	214	-	-	-	508	-	-	-	167	889
1969	142	-	-	-	794	-	-	-	161	1097
1970	165	-	-	1	724	-	-	-	120	1010
1971	114	-	-	-	673	-	-	-	116	903
1972	142	-	-	-	1073	-	-	-	123	1338
1973	89	-	-	-	-	3	-	-	127	219
1974	299	-	-	-	-	13	-	-	223	535
1975	295	-	-	-	-	17	-	-	290	602
1976	339	-	-	-	-	4	-	-	421	764
1977	157	1	3569	-	-	1	-	-	465	4193
1978	186	21	5496	14	-	8	-	-	515	6240
1979	151	18	5119	76	-	1	-	-	696	6061
1980	237	7	5242	-	-	1	-	1	769	6257
1981	244	-	5814	-	-	3	-	23	780	6864
1982	154	-	4253	-	-	-	-	32	1022	5461
1983	167	-	6214	-	-	-	-	26	1045	7452
1984	207	-	3927	-	-	-	-	486	1100	5720
1985	269	-	3741	-	-	-	-	20	1022	5052
1986	241	-	4574	-	1335	-	-	17	1795	7962
1987	149	-	5213	-	848	-	-	19	2010	8239
1988	191	-	5211	-	1066	-	-	22	1740	8230
1989	145	-	3893	-	994	-	-	18	1487	6537
1990	133	-	4831	-	1066	-	-	26	1914	7970
1991	76	-	3211	-	1045	-	-	22	1962	6316
1992	62	-	2849	-	1014	-	-	19	1889	5833
1993	55	-	2325	-	1137	-	-	7	2135	5659
1994	94	-	2621	-	921	-	-	8	2391	6035
1995	88	2	2315	-	1107	-	-	4	2168	5684
1996	94	-	2684	-	1190	6	-	5	2519	6498
1997	99	-	2443	-	984	4	< 0.5	7	2540	6077
1998	92	-	2375	-	886	1	-	11	2347	5712
1999	86	-	-	-	976	-	3	19	1703	2787
2000	71	-	2422	-	1069	-	-	5	1810	5377
2001	100	-	2515	-	1274	-	-	9	1987	5885
2002	117	-	2481	-	1308	-	-	17	1999	5922
2003	113	-	2284	-	1151	-	-	12	1788	5348
2004	104	-	1914	-	1049	1	-	13	1705	4786
2005	98	-	2198	-	728	1	-	16	1684	4725

Year	Belgium	Denmark	France	Germany	Ireland	Netherlands	Norway	Spain	UK	Total Subarea 7
2006	78	-	2223	-	1144	1	-	50	1569	5066
2007	90	-	2003	-	1034	3	-	2	1850	4982
2008	76	-	1606	-	1058	1	-	20	1544	4305
2009	41	-	1686	-	1198	4	-	5	1614	4548
2010	35	-	1859	-	1367	2	-	6	1515	4784
2011	37	-	1801	-	1296	2	-	8	1908	5052
2012	43	-	1430	-	1520	1	< 0.5	4	1898	4896
2013	39	-	1813	-	1730	1	-	22	1936	5541
2014	84	-	2068	-	1508	1	-	27	2184	5872
2015	32	-	1176	-	1447	1	-	25	1501	4182
2016	42	-	1257	-	1536	< 0.5	-	23	1958	4817
2017	19	-	960	-	1487	< 0.5	-	23	1398	3887
2018	21	-	819	-	878 ^c	9	-	25	1267	3018 ^c
2019	12	-	550	-	14 ^c	2	-	5	988	1570 ^c
2020	17	-	584	-	602 ^c	2	-	3	974	2182 ^c
2021*	7	-	584	-	419	2	-	1	802	1816
2022*	7	-	494	-	355	1	-	< 0.5	671	1528

* Preliminary official landings.

^c Incomplete/missing as a result of part of the data being unavailable under data confidentiality clauses.

Summary of the assessment

Table 10 Pollack in subareas 6–7. Assessment summary. Landings values used in the assessment, comprised of official landings prior to 2003 and ICES estimated landings since 2003. High and Low refer to 95% confidence intervals. Weights are in tonnes.

Year	Relative biomass			Landings*	Relative fishing pressure		
	Relative B	High	Low		Relative F	High	Low
1986	1.16	2.90	0.46	8517	1.26	2.16	0.73
1987	1.06	2.42	0.46	8709	1.29	2.13	0.79
1988	0.98	2.11	0.45	8742	1.36	2.12	0.87
1989	0.90	1.88	0.43	6931	1.37	2.07	0.91
1990	0.85	1.73	0.42	8389	1.41	2.05	0.96
1991	0.80	1.59	0.40	6685	1.43	2.03	1.01
1992	0.75	1.49	0.38	6080	1.37	1.95	0.96
1993	0.73	1.43	0.37	5983	1.34	1.89	0.95
1994	0.72	1.38	0.38	6371	1.36	1.88	0.99
1995	0.71	1.33	0.38	6188	1.41	1.89	1.05
1996	0.69	1.26	0.38	6835	1.47	1.93	1.12
1997	0.66	1.19	0.37	6325	1.53	1.97	1.19
1998	0.63	1.11	0.36	5940	1.53	1.95	1.20
1999	0.60	1.06	0.34	5438	1.52	1.93	1.19
2000	0.59	1.02	0.34	5568	1.53	1.93	1.21
2001	0.57	0.97	0.34	6102	1.61	1.99	1.30
2002	0.55	0.91	0.33	6053	1.71	2.08	1.41
2003	0.51	0.84	0.31	5346	1.74	2.09	1.45
2004	0.47	0.78	0.29	4802	1.71	2.04	1.43
2005	0.45	0.75	0.27	4676	1.68	2.01	1.41
2006	0.44	0.72	0.27	4612	1.69	2.01	1.42
2007	0.42	0.69	0.26	4644	1.69	2.01	1.43
2008	0.41	0.68	0.25	3875	1.62	1.96	1.35

Year	Relative biomass			Landings*	Relative fishing pressure		
	Relative B	High	Low		Relative F	High	Low
2009	0.41	0.68	0.25	3976	1.55	1.92	1.25
2010	0.42	0.69	0.25	4164	1.56	1.95	1.25
2011	0.42	0.69	0.26	4554	1.62	2.03	1.30
2012	0.42	0.68	0.26	4573	1.72	2.17	1.37
2013	0.41	0.65	0.25	4965	1.87	2.35	1.48
2014	0.38	0.59	0.24	5409	2.09	2.62	1.66
2015	0.33	0.51	0.21	3867	2.19	2.74	1.75
2016	0.29	0.44	0.19	4413	2.28	2.85	1.82
2017	0.25	0.37	0.16	3301	2.40	2.98	1.93
2018	0.21	0.31	0.14	2905	2.40	2.95	1.95
2019	0.18	0.26	0.12	2221	2.36	2.90	1.92
2020	0.15	0.23	0.10	2255	2.40	2.98	1.93
2021	0.13	0.20	0.09	2088	2.59	3.27	2.04
2022	0.11	0.17	0.07	1558	2.66	3.50	2.02
2023	0.09	0.15	0.05				

* Official landings 1986–2002 and ICES estimated landings 2003–2022.

Sources and references

EU. 2019. Regulation (EU) 2019/472 of the European Parliament and of the Council of 19 March 2019 establishing a multiannual plan for stocks fished in the Western Waters and adjacent waters, and for fisheries exploiting those stocks, amending Regulations (EU) 2016/1139 and (EU) 2018/973, and repealing Council Regulations (EC) No 811/2004, (EC) No 2166/2005, (EC) No 388/2006, (EC) No 509/2007 and (EC) No 1300/2008. Official Journal of the European Union, L 83. 17 pp. <http://data.europa.eu/eli/reg/2019/472/oj>

ICES. 2012. ICES Implementation of Advice for Data-limited Stocks in 2012 in its 2012 Advice. ICES CM 2012/ACOM:68. 42 pp. <https://doi.org/10.17895/ices.pub.5322>

ICES. 2021. Benchmark Workshop on selected stocks in the Western Waters in 2021 (WKWEST). ICES Scientific Reports. 3:31. 504 pp. <https://doi.org/10.17895/ices.pub.8137>

ICES. 2022a. Advice on fishing opportunities. In Report of the ICES Advisory Committee, 2022. ICES Advice 2022, Section 1.1.1. <https://doi.org/10.17895/ices.advice.19928060>

ICES. 2022b. Working Group for the Celtic Seas Ecoregion (WGCSE). ICES Scientific Reports. 4:45. <http://doi.org/10.17895/ices.pub.19863796>

ICES. 2023a. Advice on fishing opportunities (2023). General ICES Advice guidelines. Report. <https://doi.org/10.17895/ices.advice.22240624.v1>

ICES. 2023b. Benchmark Workshop 2 on the development of MSY advice for category 3 stocks using SPiCT (WKBMSYSPICT2). ICES Scientific Reports. 5:65. <https://doi.org/10.17895/ices.pub.23372990>

ICES. 2023c. Working Group for the Celtic Seas Ecoregion (WGCSE). Draft report. ICES Scientific Reports. 5:32. 976 pp. <https://doi.org/10.17895/ices.pub.22268980>. Publication of the full report is expected end of 2023.

Radford, Z., Hyder, K., Zarauz, L., Mugerza, E., Ferter, K., Prellezo, R., Strehlow, H. V., *et al.* 2018. The impact of marine recreational fishing on key fish stocks in European waters. PLoS ONE, 13: e0201666. <https://doi.org/10.1371/journal.pone.0201666>

[Download the stock assessment data and figures](#)

Recommended citation: ICES. 2023. Pollack (*Pollachius pollachius*) in subareas 6–7 (Celtic Seas and the English Channel). In Report of the ICES Advisory Committee, 2023. ICES Advice 2023, pol.27.67.

<https://doi.org/10.17895/ices.advice.21841011>